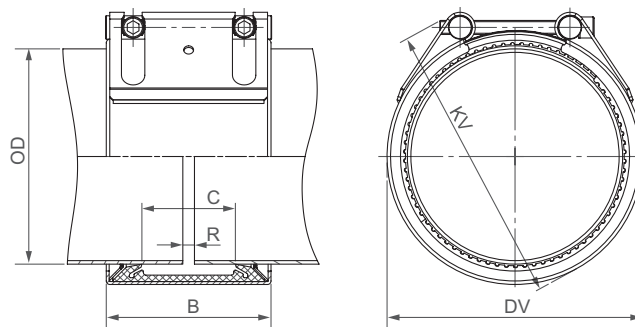


**STRAUB-GRIP-L | Ø 180.0 - 711.2mm**

Components / Materials	W1	W2	W4	W5
Casing		AISI 316 L or similar		AISI 316 L or similar
Bolts		AISI 4135		A4 - 80
Bars		AISI 12L14, galvanised		AISI 316 L
Anchoring rings		AISI 301		AISI 301
Strip insert (option)		AISI 316 L / HDPE		AISI 316 L / HDPE

<b>Sealing sleeve EPDM</b>	Temp.: -20°C up to +100°C Medium: all qualities of water, waste water, air, solids and chemical products
<b>Sealing sleeve NBR</b>	Temp.: -20°C up to +80°C Medium: water, gas, oil, fuel and other hydrocarbons
<b>Sealing sleeve FPM / FKM</b>	Temp.: -20°C up to +180°C Medium: ozone, oxygen, acids, gas, oil and fuel (only with strip insert)



OD [mm]	Clamping range [mm]	PS [bar]	PN [bar]	B [mm]	C [mm]	DV [mm]	KV [mm]	R without strip insert [mm]	R with strip insert [mm]	Torque rate [Nm]
180.0	178.0 - 182.0	16.0	10.0	141	80	205	255	5-10	5-35	50
193.7	192.0 - 195.5	16.0	10.0	141	80	224	270	5-10	5-35	50
200.0	198.0 - 202.0	15.0	10.0	141	80	230	275	5-10	5-35	50
204.0	202.0 - 206.0	14.0	10.0	141	80	234	280	5-10	5-35	50
206.0	204.0 - 208.0	14.0	5.5	141	80	234	280	5-10	5-35	50
244.5	242.0 - 247.0	9.0	5.5	141	80	275	320	5-10	5-35	50
250.0	247.5 - 252.5	9.0	5.5	141	80	280	325	5-10	5-35	50
254.0	251.5 - 256.5	9.0	5.5	141	80	284	325	5-10	5-35	50
256.0	253.5 - 258.5	9.0	5.5	141	80	284	325	5-10	5-35	50
267.0	264.5 - 269.5	8.0	5.0	141	80	297	340	5-10	5-35	50
273.0	270.5 - 275.5	7.0	4.0	141	80	303	345	5-10	5-35	60
306.0	303.0 - 309.0	6.0	3.0	141	80	334	375	5-10	5-35	60
323.9	320.5 - 327.0	5.0	3.0	141	80	354	395	5-10	5-35	60
355.6	352.0 - 359.0	10.0	2.5	141	80	386	425	5-10	5-35	90
406.4	402.5 - 410.5	7.0	2.0	141	80	436	470	5-10	5-35	100
457.2	452.5 - 461.5	5.0	-	141	80	487	520	5-10	5-35	100
508.0	503.5 - 512.5	4.0	-	141	80	538	570	5-10	5-35	110
558.8	554.5 - 563.5	3.0	-	141	80	589	620	5-10	5-35	110
609.6	605.5 - 614.0	2.0	-	141	80	640	670	5-10	5-35	120
711.2	707.0 - 715.0	1.0	-	141	80	742	770	5-10	5-35	120

STRAUB PRODUCES CUSTOM MADE COUPLINGS FROM 180.0 UP TO 711.2 MM

Typing errors may occur. Technical details are subject to change.

**REMARKS:**

- Follow fitting / disassembly instructions
- PS = Working pressure considering the application loads  
Test pressure = PS x 1.5 (for example industry, water supply etc.)  
Burst pressure = approx. PS x 2
- PN = Nominal pressure includes four times safety factor (e.g. shipbuilding)
- The pressure values are valid on radial rigid carbon steel pipes under static loads
- For minimum wall-thickness of pipe, see Technical Manual STRAUB
- Strip inserts are required for special applications
- Other sealing sleeves and temperature ranges on request